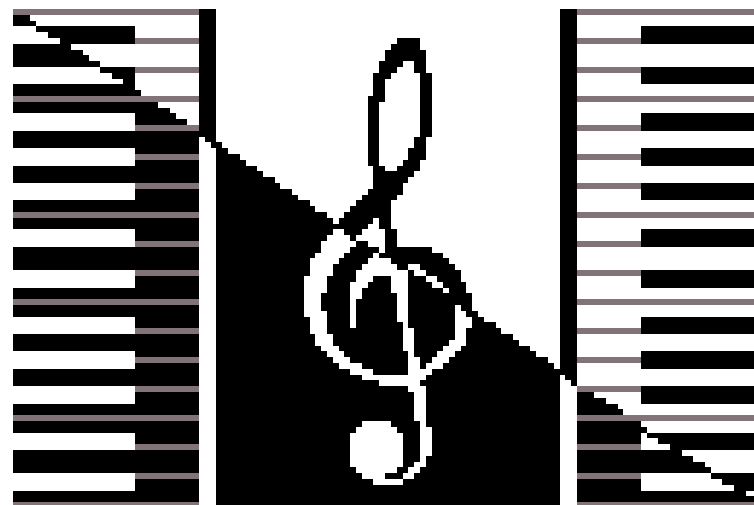
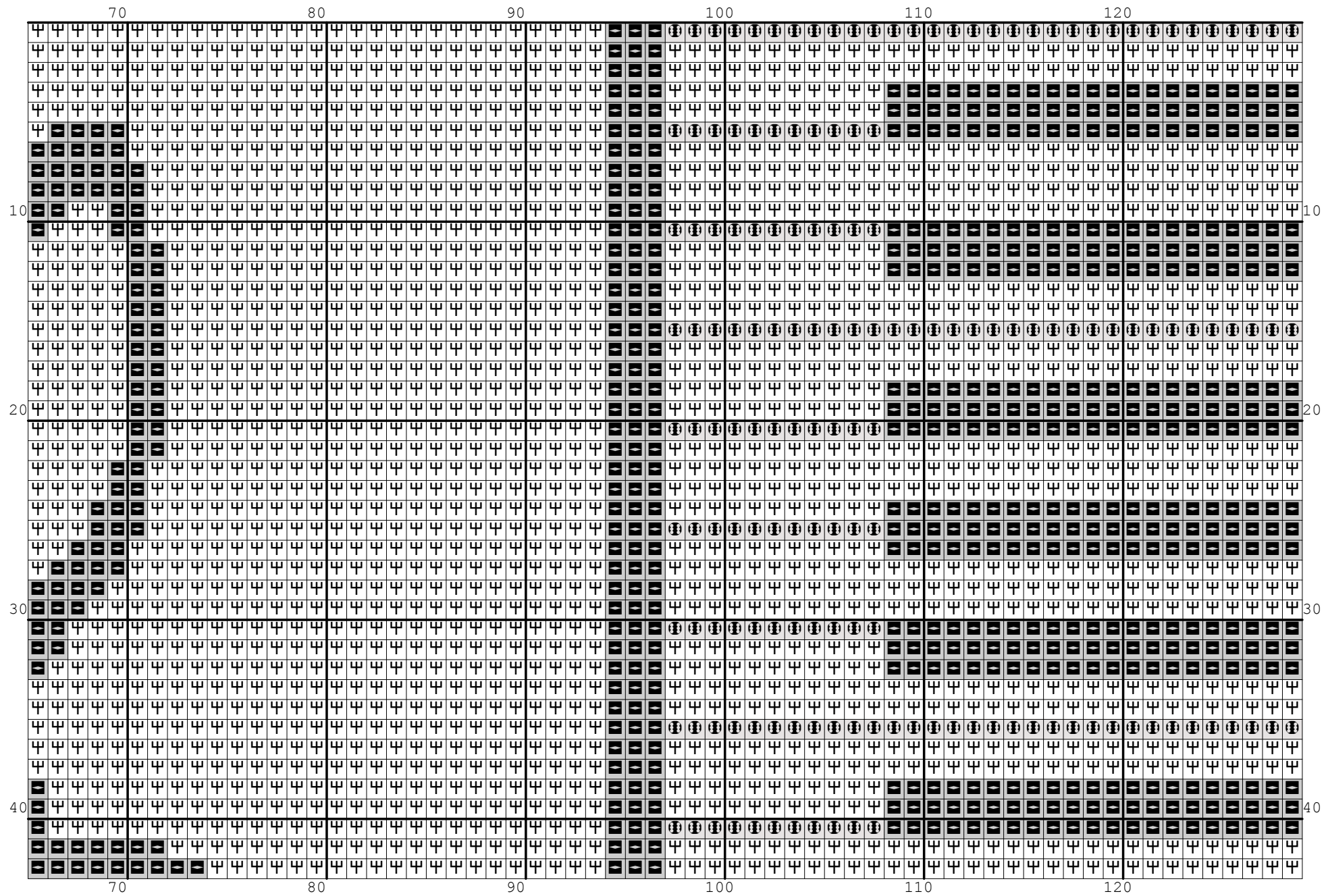


Nazwa: Klucz wiolinowy
Autor: Grzegorz Żochowski

Rozmiar: 129x86
Kolorów: 3

Na białej kanwie można nie wyszywać koloru Ariadna 1500 a na czarnej Ariadna 1819.
Wzór pochodzi ze strony www.wzory-haftu.pl





10 20 30 40 50 60

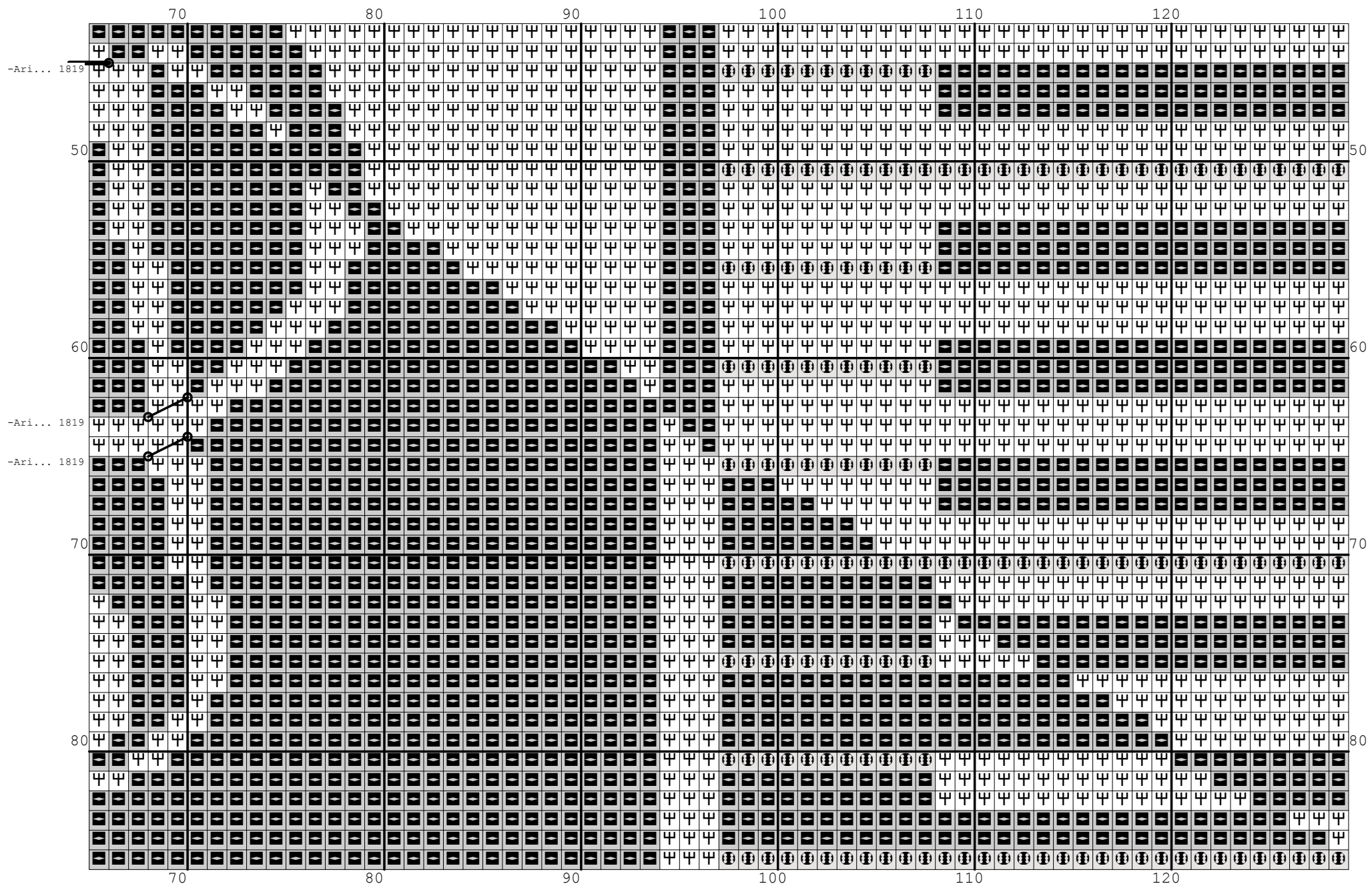
50 50




60 60

70 70

80 80

10 20 30 40 50 60



| Symbol | Nr nici | Krzyżyki | Motki 2 nitki | Motki 3 nitki | Motki 6 nitek |
|---|---------------------|----------|------------------|------------------|------------------|
|  | Ariadna (nowa) 1500 | 5255 | 3 | 4 | 8 |
|  | Ariadna (nowa) 1815 | 648 | 1 | 1 | 1 |
|  | Ariadna (nowa) 1819 | 5191 | 3 | 4 | 8 |