

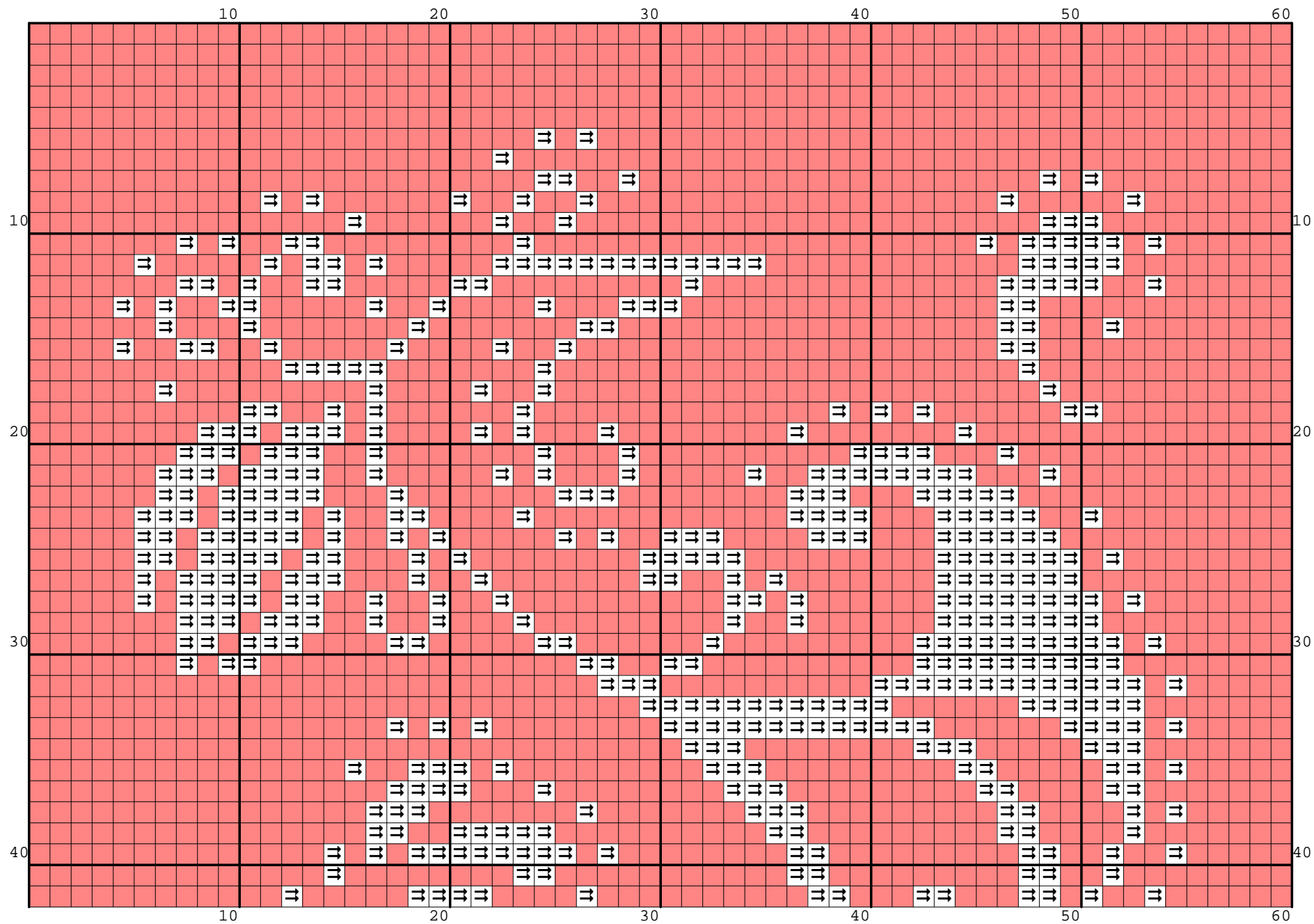
Nazwa: Motyw roślinny na czerwonej kanwie
Autor: Sonea

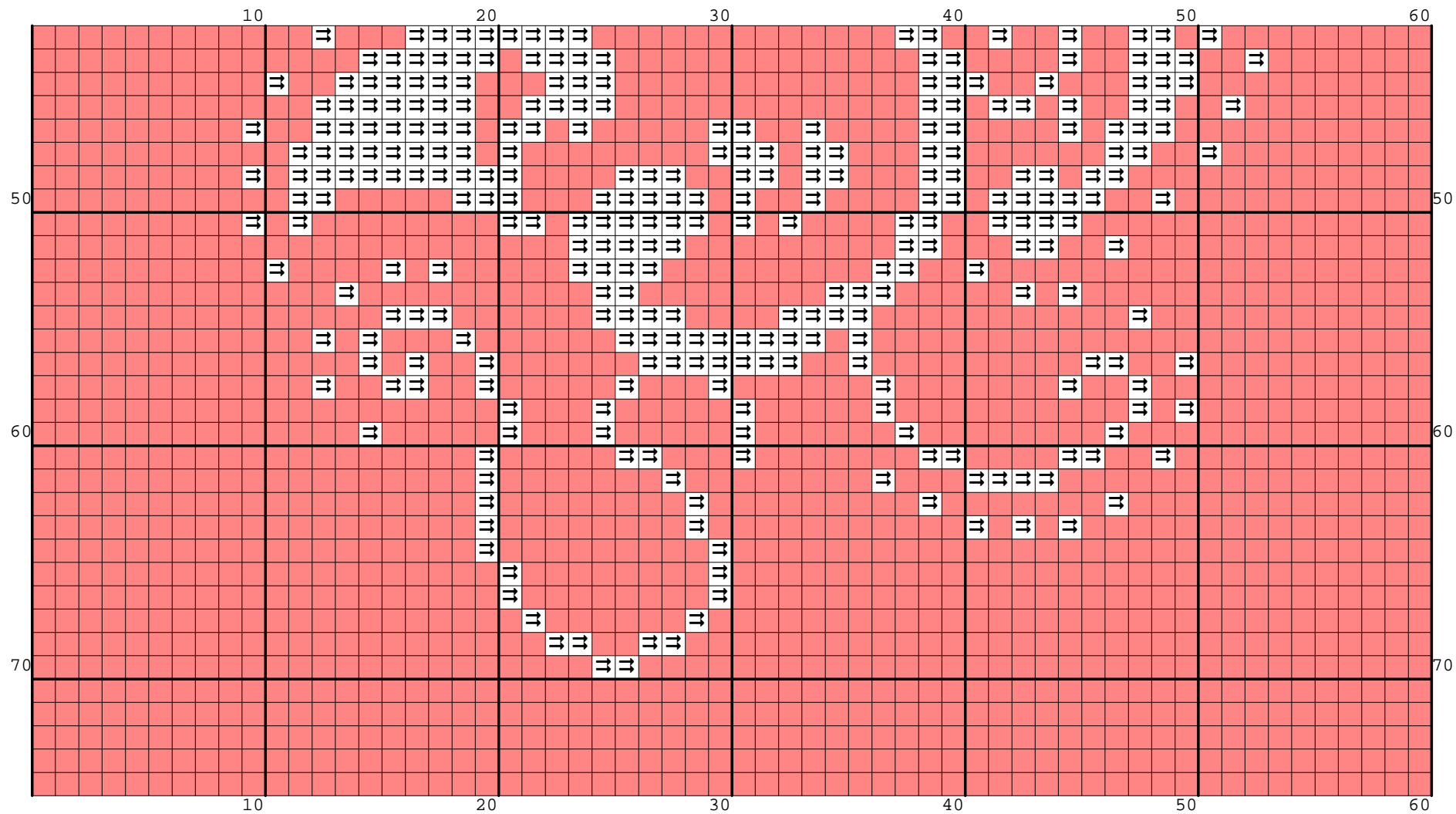
Rozmiar: 60x75
Kolorów: 2

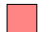

(PL) Wzór pobrany ze strony: www.wzory-haftu.pl
Jeżeli użyjesz tego wzoru, będziesz zadowolona/y z efektu i uznasz za stosowne wspomóc rozwój witryny www.wzory-haftu.pl możesz wpłacić dowolną kwotę na konto podane w dziale "Kontakt" na wspomnianej stronie.

(EN): Pattern downloaded from: www.cross-stitch-patterns.eu after using this pattern you are happy with the effect and you think that it is worth to support the development of www.cross-stitch-patterns.eu website feel free to donate any amount to the bank account given in the "Contact" section on the abovementioned site.







| Symbol | Nr nici | Krzyżyki | Motki 2 nitki | Motki 3 nitki | Motki 6 nitek |
|---|---------------------|-----------------|--------------------------|--------------------------|--------------------------|
|  | Kanwa | 3696 | 2 | 3 | 5 |
|  | Ariadna (nowa) 1500 | 804 | 1 | 1 | 1 |